

Interior Sign Package

Cambria Hotels



CONTACT US

Phone:

316.267.4171

Email:

dailymorders@identitygroup.com

**IDENTITY GROUP IS AN
APPROVED SIGNAGE SUPPLIER**

NO FEE* PROJECT SERVICES

- Estimating
- Planning - Wayfinding
- Project Management
- Evacuation Map Development

* Requires minimum project values

DESIGN SERVICES AVAILABLE

COLORS / MATERIALS



Chemetal # 812 Satin
Smoked Chrome
(Face)



CDM-000230
Florence Walnut
(Backer Or
Face On Restroom Signage)



Black
(Copy)



LM912-354A
Brushed Aluminum/Black
(Copy & Symbols
On Restroom Signage)

Sign Materials: Metal Laminate Or
Painted Acrylic Face, With Some Signs
Having Digitally Printed Woodgrain Backers.
Copy is Tactile or Screen Printed

Font: HelveticaNeue LT 55
Roman, Regular

GUEST ROOM SIGNAGE



RM0407 CM19
Guest Room Number
3-1/2" x 7"



BR0401 CM19
Accessible & Hearing
Impaired Symbols
3-1/2" x 1"



HL0503 CM19
Guest Room Number
4-7/8" x 3-1/8"



FEP0911 CAM
Guest Room Fire Evacuation Plan
With State Lodging Laws
9" x 11"

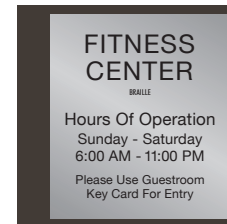
IDENTIFICATION SIGNAGE



ID0806 CM19
1-2 Line Small Public
Room ID
7-1/2" x 5-1/2"



ID1106 CM19
1-2 Line Large Public Room ID
10-1/2" x 5-1/2"



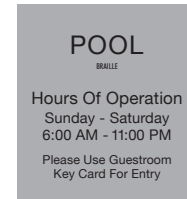
ID0909 CM19
1-2 Line Room ID
With Hours
9-1/4" x 9-1/4"



ID0806 CM19 (Exterior)
1-2 Line Small
BOH/Exterior Room ID
7-1/2" x 5-1/2"



ID1106 CM19 (Exterior)
1-2 Line Large
BOH/Exterior Room ID
10-1/2" x 5-1/2"



ID0809 CM19 (Exterior)
1-2 Line Room ID
With Hours
7-1/2" x 8-1/2"



MT1211 CM19
1-2 Line Meeting Room ID
With Area For Insert
11-1/2" x 10-3/4"



RR0809 CM19
Public Restroom ID
7-1/2" x 8-1/2"

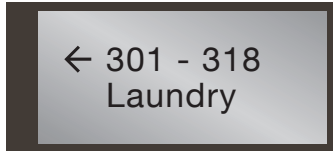


RR0809 CM19 (Exterior)
BOH/Exterior Restroom ID
7-1/2" x 8-1/2"

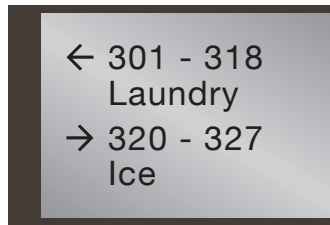
Interior Sign Package

Cambria Hotels

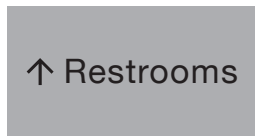
DIRECTIONAL SIGNAGE



DR1206 CM19
1-2 Line Guestroom Floor Directionals
13-3/4" x 6-1/4"



DR1209 CM19
3-4 Line Guestroom Floor Directionals
13-3/4" x 9-1/4"



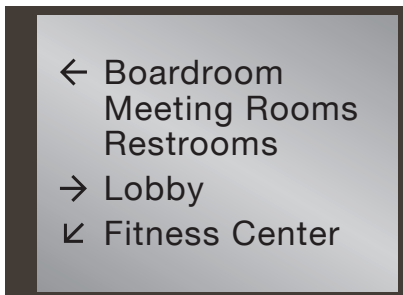
DR1106 CM19 (Exterior)
1-2 Line Exterior Directionals
10-1/2" x 5-1/2"



DR1706 CM19
1-2 Line Public Area Directionals
16-3/4" x 6-1/4"



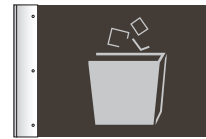
DR1709 CM19
3-4 Line Public Area Directionals
16-3/4" x 9-1/4"



DR1712 CM19
5-6 Line Public Area Directionals
16-3/4" x 12-1/4"

NOTE:
Additional Sizes
Are Available
Upon Request

PROJECTION MOUNT SIGNAGE

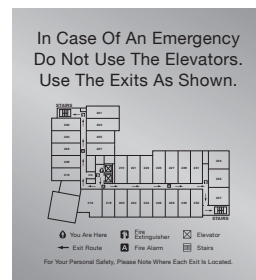


PJ0906 CM19
Double-Sided Ice
Projection Mount Sign
8-1/2" x 5-1/2"

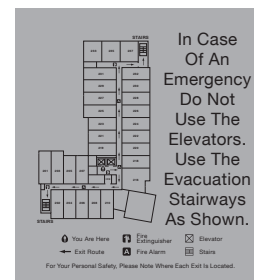


PJ0906 CM19
Double-Sided Restroom
Projection Mount Sign
8-1/2" x 5-1/2"

FIRE EVACUATION & ELEVATOR SIGNAGE



FE1112 CM19
Fire Evacuation Plan With Map
For Elevators & Public Corridors
10-1/2" x 11-1/2"



FE1112 CM19 (Exterior)
Fire Evacuation Plan With Map
For BOH/Exterior Elevators
10-1/2" x 11-1/2"

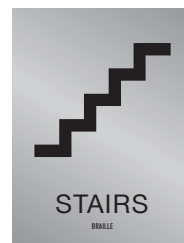


EL0304 CM19
Elevator Jamb
Numbers
3" x 3-1/2"



EL0401 CM19
Directory Buttons For
Inside Elevator
3-1/2" x 1-1/4"

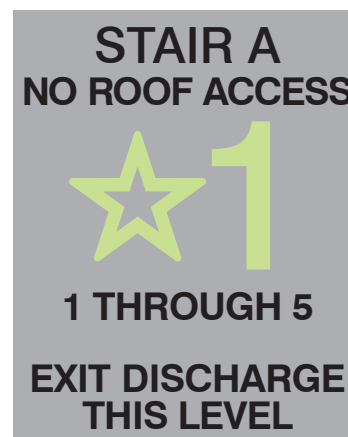
STAIRWELL SIGNAGE



ST0810 CM19
Public Stair ID
7-1/2" x 10"



ST0810 CM19 (Exterior)
BOH/Exterior Stair ID
7-1/2" x 10"



ST1518 CM19
Interior
Stairwell
Informational
With 6" Tall
Phosphorescent
Number
14-1/2" x 18"



ST0903 CM19
Interior Stairwell Level ID
8-1/2" x 3"

Interior Sign Package

Cambria Hotels

INFORMATIONAL SIGNAGE

For Your Safety This Door Is Locked At All Times. Please Use Your Guestroom Key Card For Re-Entry.

IF0604 CM19
Small Public Informational
6" x 4"
Note: Copy May Vary

Maximum Occupancy
328

IF0806 CM19
Medium Public Informational
7-1/2" x 5-1/2"
Note: Copy May Vary

 This Is A Smoke Free Property
Thank Your For Not Smoking

IF1106 CM19
Large Public Informational
10-1/2" x 5-1/2"
Note: Copy May Vary

FRONT DESK SIGNAGE

This Hotel Is Owned By Cambria Hotels And Operated By Hospitality Company Under A License From Choice Hotels International, Inc.

OW1109 CM19
Owner/Operator
10-1/2" x 8-1/2"

Please Use Your Guestroom Key Card For Entry, Or Ring Bell For Service

IF0604 CM19 (Exterior)
Small BOH/Exterior Informational
6" x 4"
Note: Copy May Vary

In Case Of An Emergency Lift Handset For Operator

IF0806 CM19 (Exterior)
Medium BOH/Exterior Informational
7-1/2" x 5-1/2"
Note: Copy May Vary

Laundry Detergent And Fabric Softener Are Available For Purchase In The Market.

IF1106 CM19 (Exterior)
Large BOH/Exterior Informational
10-1/2" x 5-1/2"
Note: Copy May Vary

Check-In Time
3:00 PM
Check-Out Time
11:00 AM

CK1206 CM19
Check In/Check Out Informational
12-1/4" x 6-1/4"

FITNESS CENTER SIGNAGE

FITNESS CENTER

Exercise Facility Is For Guests Only.
No Children Under 16 Allowed.
Proper Attire Must Be Worn.
Please Wipe Off Equipment After Use.
Equipment Should Not Be Used By Persons Experiencing Health Problems. Use Equipment At Your Own Risk.
Management Is Not Responsible For Injuries Or Loss Of Personal Belongings.
No Smoking, Food, Drinks Or Glass.



FT1518 CM19
Fitness Center Rules
15" x 18"

FT0401 CM19
Please Use Headphones
3-1/2" x 1-1/4"

Sound Is Turned Off
Closed Captioning Only

FT0404 CM19
Closed Caption TV
4" x 4"

GUEST LAUNDRY SIGNAGE

GUEST LAUNDRY

Facility Is For Guest Use Only.
Management Is Not Responsible For Lost Or Damaged Articles.
Use At Your Own Risk.
Please Wipe Off Equipment After Use.
Management Does Not Provide An Attendant For The Operation Of Laundry Equipment.
Read All Operating Instructions.
Do Not Leave Personal Property Unattended.
No Smoking, Food, Drinks Or Glass.



GL1518 CM19
Guest Laundry Rules
15" x 18"

POOL SIGNAGE

POOL RULES

Hours: XX:XX AM - XX:XX PM

Pool Is For Guest Use Only

No Lifeguard On Duty

- No Children Allowed Under 16 Without Supervision.
- Use Pool At Your Own Risk.
- Proper Swimwear Required.
- Running And Unnecessary Noise Are Not Permitted.
- Management Reserves The Right To Deny Use Of The Pool To Anyone At Any Time.
- If You Have Health Conditions Requiring Medical Care You Should Consult A Physician Before Entering The Pool.

Pool Occupancy: XX

 No Diving 

PL3030 CM19
Pool & Spa Rules
30" x 30"

Interior Sign Package

Cambria Hotels

POOL SIGNAGE *cont.*



LF2018 CM19
Pool Lift Rules
20" x 18"



NL4612 CM19
*No Lifeguard
On Duty*
46" x 12"



ND3312 CM19
No Diving
33" x 12"

PLEASE NOTE:

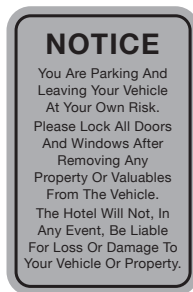
State and local codes may require your pool and spa area signage to have certain text, layouts and copy sizes specific to your area.

If code-related signs are needed for your project, we will quote them in place of the brand standard signs.

EXTERIOR & PARKING SIGNAGE



PRK 1218 CM19
Hotel Guests Only
12" x 18"
Note: Post Provided
By Property



PRK 1218 CM19
Notice
12" x 18"
Note: Post Provided
By Property



GSIPRK 1218 CM19
Accessible Parking
12" x 18"
Note: Post Provided
By Property



GSIPRK 1206 CM19
Van Accessible
12" x 6"
Note: Post Provided
By Property

6345

AD06 CM19
*Cut Out Acrylic Copy
For Address Numbers*
6" Tall Copy
Note: Copy May Vary

CLEARANCE 11'-04"

CL06 CM19
Cut Out Acrylic Clearance Copy For Porte Cochere
6" Tall Copy
Note: Copy May Vary

IDENTITY GROUP

Interior Sign Package

Cambria Hotels

EXTERIOR BRANDING SIGNAGE



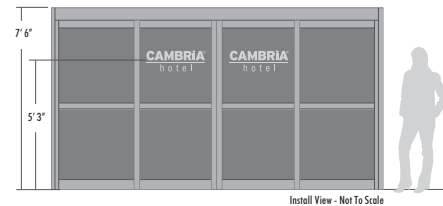
LG2012 CM19
Etched Stainless Steel Logo Plaque
19-1/2" x 12"

NOTE: Either the Exterior Stainless Steel Plaque or the Vinyl Entry Door Logos are required at all properties.

CAMBRIA®
hotel

LG2911 CM19
Vinyl Logos For Entry Door(s)
28-1/2" x 10-1/8"

Placement As Shown Below & Mounted At Front Entrance on Outer Most Glass Doors.



NOTE: Logo Flag is required by brand unless codes or jurisdictions prohibit use.

Flag is available in 2 different sizes, with each size having 2 different mounting options (either sleeve or grommets).

Please specify which option is best suited for your property. (Logo flag should not be larger than American flag.)

FL5836 CM19
SMALL Fabric Flag - 2 sided
(with sleeve or grommets for hanging)
58" x 36"

FL7248 CM19
LARGE Fabric Flag - 2 sided
(with sleeve or grommets for hanging)
72" x 48"