

# Interior Signage Package

## Element by Westin



**element**<sup>SM</sup>  
BY WESTIN

### CONTACT US

Phone:  
316.267.4171  
Email:  
dailyorders@identitygroup.com

**IDENTITY GROUP IS AN APPROVED SIGNAGE SUPPLIER**

### NO FEE\* PROJECT SERVICES

- Estimating
  - Planning - Wayfinding
  - Project Management
  - Evacuation Map Development
- \* Requires minimum project values

### DESIGN SERVICES AVAILABLE

### COLORS / MATERIALS



Amber  
Bamboo Plywood



Sherwin Williams  
6099 Sand Dollar



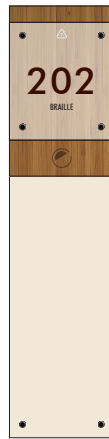
Rowmark 311-803  
Dark Brown

Sign Material: Bamboo Plywood,  
Frosted Acrylic, Painted Acrylic

Font: Futura Medium BT

Rev. 04-18-22

### GUEST ROOM SIGNAGE



4" x 6-1/2"  
RMN0407 ELE\*  
Guest Room Number  
\*Note - This Is For  
Re-Orders Only.

4" x 16-1/2"  
RMN0417 ELE  
Guest Room Number  
With Steel Backer  
To Place Magnets



3" x 3"  
SPR0303 ELE  
Do Not Hang  
Items from  
Sprinkler Head



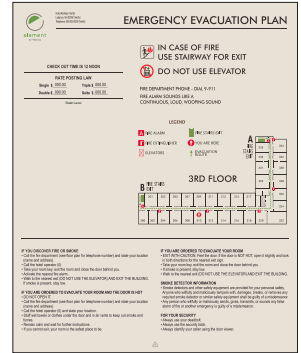
3" x 2"  
DEC0302 ELE  
Please Use  
Deadbolt Decal



3" x 2-1/2"  
INF0303 ELE  
Balcony Door Security Info



4-1/2" x 4"  
SAF0504 ELE  
In Room Safe  
Instructions



13" x 16"  
FEP1316 ELE  
Guest Room Evacuation  
Plan

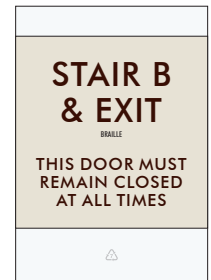
### IDENTIFICATION SIGNAGE



8" x 11-1/2"  
ID0812 ELE  
Major Room Identification  
(Copy varies)



8" x 11-1/2"  
STR0812 ELE A  
Stair Identification  
(in Corridor)



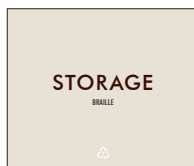
8" x 11-1/2"  
STR0812 ELE B  
Stair Identification with  
Door Information  
(in Corridor)



9" x 13"  
RR0913 ELE  
Restroom Identification



9" x 10"  
RR0910 ELE  
Exterior Restroom  
Identification



8" x 6-3/4"  
ID0807 ELE  
Utility & Back  
of House Room  
Identification  
(Copy varies)



11" x 15"  
MTG1115 ELE  
Meeting Room Identification  
with Insert Holder

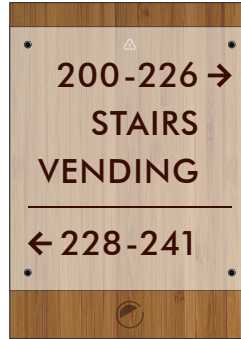
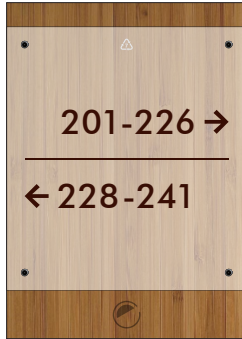
# Interior Signage Package

## Element by Westin

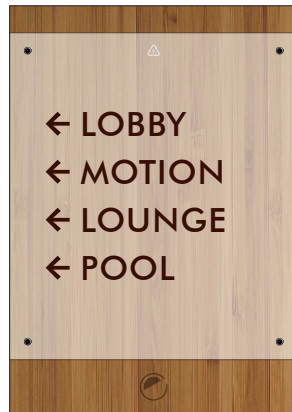
### DIRECTIONAL SIGNAGE



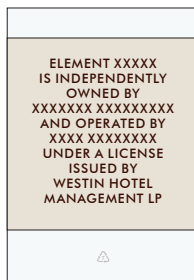
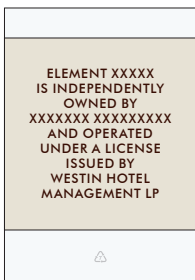
10" x 14"  
DIR1014 ELE  
Directional for Guestroom Floors



12" x 17"  
DIR1217 ELE  
Directional for Public Space Areas

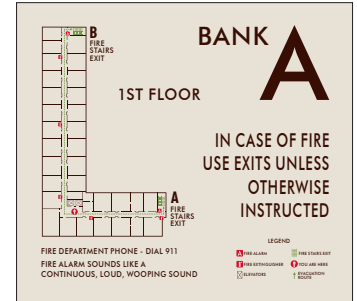


### FRONT DESK SIGNAGE

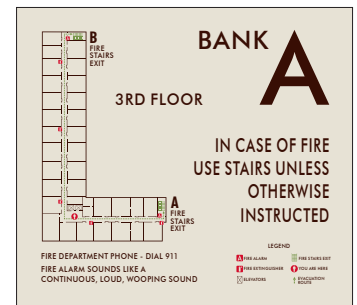


8" x 11-1/2"  
OWN0812 ELE  
Owner / Operator  
(Copy Options as Shown)

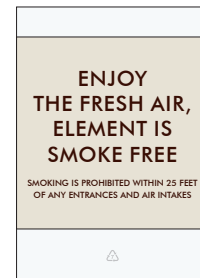
### FIRE EVACUATION & ELEVATOR SIGNAGE



14" x 12-1/2"  
FEP1413 ELE  
Corridor/Elevator Evacuation  
(Plan for Ground Level)



14" x 12-1/2"  
FEP1413 ELE  
Corridor/Elevator Evacuation  
(Plan for Upper Levels)



8" x 11-1/2"  
INF0812 ELE  
Element is Smoke Free  
(Located at Elevators)

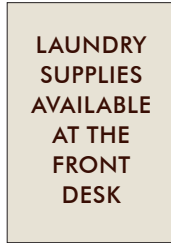
# Interior Signage Package

Element by Westin

## INFORMATIONAL SIGNAGE



7" x 10"  
TEL0710 ELE  
Emergency Telephone



7" x 10"  
INFO710 ELE  
General Informational



10" x 10"  
AED1010 ELE  
Automatic External Defibrillator

## INTERIOR STAIRWELL SIGNAGE



8-1/2" x 3"  
STR0903 ELE  
Interior Stairwell  
Level Identification



14-1/2" x 18"  
STR1518 ELE  
Interior Stairwell Landing Informational

## DISTRACTION GRAPHICS



27-7/8" x 2-1/2" Overall  
(Each Logo is 2-1/2" Dia.)  
PSV2803 ELE  
Faux Etch Vinyl Graphics

NOTE: 4 Logos equals 1 Set  
Client To Verify How Many Sets Are Needed

Required on Full Length Glass Windows and Doors



# Interior Signage Package

## Element by Westin

### POOL & WHIRLPOOL SIGNAGE

**POOL RULES**

The following rules are designed for your safety and convenience.

All persons using the pool do so at their own risk. The hotel accepts no liability for any injury, death or loss associated with the use of the pool.

Do not use while impaired by alcohol or drugs.

Appropriate swimwear must be worn in the pool.

Children wearing diapers shall wear rubber pants or "swim diapers" while in the pool.

Only flotation devices provided by the hotel, except small swimming aids, are permitted in the pool.

Horseplay in and around the pool area is not permitted.

Pets are not permitted in the pool area.

No glass in pool or on pool deck.

Children under 12 years must be accompanied by an adult.

Running is not permitted in the pool area.

**NO LIFEGUARD ON DUTY**

**NO DIVING** 

Pool Hours:  
Monday - Friday XX:XX am - X:XX pm  
Saturday - Sunday XX:XX am - X:XX pm

In case of emergency, use phone marked EMERGENCY



26" x 38"  
POL2638 ELE  
Pool Rules

**WARNING**

**NO**

**LIFEGUARD**

**ON DUTY**

26" x 38"  
WRN2638 ELE  
No Lifeguard on Duty

**FITNESS CENTER RULES**

The following rules are designed for your safety and convenience.

Consult your physician before exercising and follow his or her advise.

Improper use of this equipment can result in injury. Use the equipment only for its intended purpose.

Children under 14 years old must be accompanied by an adult at all times.

All persons using the Fitness Center area do so at their own risk.

The hotel accepts no liability for injury, death or any loss associated with the use of the Fitness Center facilities.

Do not exercised while impaired by alcohol or drugs.

No eating or horseplay is permitted.

Pets are not permitted in the Fitness Center area.


No glass containers allowed in the Fitness Center area.

Appropriate fitness attire must be worn.

Please wipe off equipment after you have used it.

**Fitness Center Hours: 24 Hours**

In case of emergency, use phone marked EMERGENCY



20" x 29"  
FIT2029 ELE  
Fitness Center Rules

**NO**

**DIVING**



20" x 29"  
NDV2029 ELE  
No Diving

#### PLEASE NOTE:

State and local codes may require your pool and spa area signage to have certain text, layouts and copy sizes specific to your area.

If code-related signs are needed for your project, we will quote them in place of the brand standard signs.